

PLANTFOOD

(SUPER CONCENTRATE)

Plantfood

Converte's Universal Natural Plantfood was scientifically designed to feed farming systems nutrients in a balanced formula to enable health benefits to flow from the soil, to the plant, to livestock, and to human populations.

This unique product has been extensively trialed and tested in Australian growing conditions over a period of 10 years, leading to the launch of Converte UNP in 2013. Plantfood is derived from natural resources and is formulated according to a system of ecological balance with chelation and natural chemistry. Plantfood contains mineral trace elements, phytoproteins, vitamins and phyto-chemicals that together help to enhance natural soil microbes and micro-organisms in soils, balance bacteria: fungi ratios and drive nutrient availability and cycling.

For use with conventional and organic production in: Horticulture, broadacre, hydroponics, home garden, pasture improvement. Easy to apply with boomspray or boomless nozzle.

Plantfood is formulated to:

- Increase the pool of macro N & P and trace elements available to the plant
- Feed organically essential soil microbes including mycorrhizal fungi
- Improve by chelation, nutrient transfer to plants
- Improve soil and plant health, giving additional resistance to weather extremes such as drought and frosts.
- Provide essential carbon for housing microbial activity in the soil

Storage and Handling: Compatibility and/or performance cannot be guaranteed when combined with other products.

Store in a cool, dry area out of direct sunlight.

Agitate or shake well before use.

Safety Directions: Product is non-hazardous. Keep out of reach of children.

Manufactured by: Converte Pty Ltd, PO Box 8159, Griffith, NSW, 2680

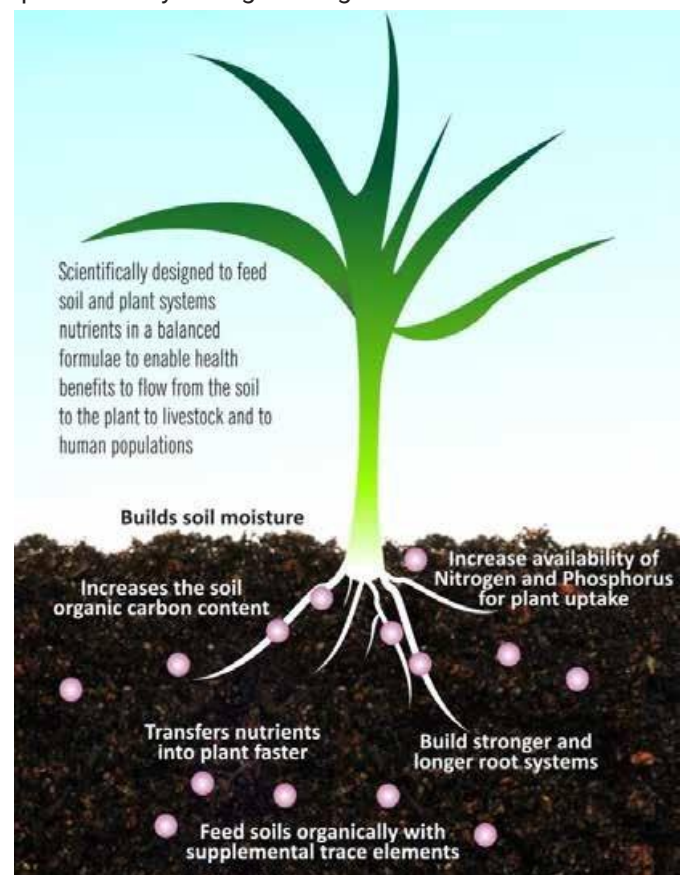
Available in 100ml, 5L, 20L and 1000 litre packaging

Manufactured by Converte Pty Ltd ABN

Trial observations and results have shown:

- Improved soil water holding ability
- Increased soil organic matter
- Improved soil aeration and drainage
- Enhanced utilisation of NPK fertiliser
- Decreased nutrient leaching
- Sustained yields
- Enhanced plant health and resilience

Works most effectively when applied 75% to soil and 25% to plant at early emergent stages.



PLANTFOOD

(SUPER CONCENTRATE)

Application Guideline Only

For specific recommendations for your nutrition programme, please contact Converte.

	Plantfood	
	Application	Timing
Broadacre	250ml/ha. Water rate 50-100L/ha	Apply pre-sowing or at 3-4 leaf stage.
Pasture	250ml/ha. Water rate 50-100L/ha	Early autumn and spring, between stock rotation and hay cuts.
Viticulture	250ml/ha. Water rate 50-100L/ha. Drip fed rate – 1L with 5000L of water	Apply during early flower stage. Plantfood can be applied to soil or foliage & soil.
Tree Horticulture	250ml/ha. Water rate 50-100L/ha. Drip fed rate – 1L with 5000L of water	Apply during early flower stage. Plantfood can be applied to soil or foliage & soil.
Vegetables	10ml per 10L of water. Drip fed rate – 1L with 5000L of water	Every 2 weeks during active growing season. Plantfood can be applied to soil or foliage & soil.
Home Gardens	10ml per 10L of water. Drip fed rate – 1L with 5000L of water	Every 2 weeks during active growing season. Plantfood can be applied to soil or foliage & soil.
Lawn/Turf	10ml per 10L of water. Covers 50 m2	Every 2 weeks during active growing season

Typical Analysis	mg/L
Kjeldahl Nitrogen as N	17,000
Phosphorus as P	367
Potassium	22,700
Organic Carbon	97,900
Sulphate	30,400
Silicon	152
Calcium	2,820
Magnesium	2,890
Sodium	10,200
Chromium	268
Cobalt	319
Copper	1,260
Manganese	2,770
Molybdenum	289
Nickel	61
Selenium	144
Zinc	3,070
Boron	574
Iron	5,460