

SEED PRIMER

(SUPER CONCENTRATE)

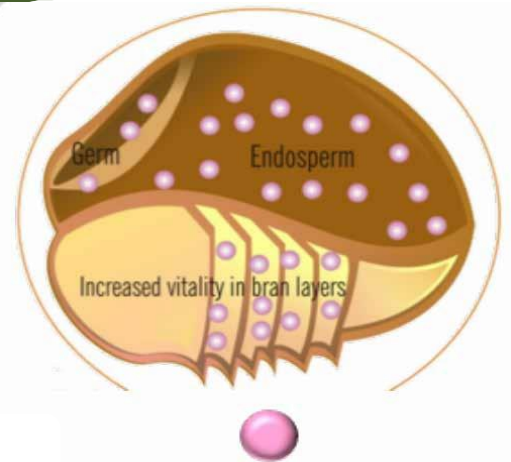
Balanced Nutrition for Seeds

Converte Seed Primer was scientifically designed to improve seed and germination efficiency. Converte Seed Primer has been specially formulated to deliver the most complex and balanced nutrient treatment directly into the seed. The seed embryo then has higher access to nutrients to improve germination rates and build vigorous growth towards maximum yield.

Objectives of seed priming:

Seed priming is another pathway to maximise nutrient uptake. This practice aims to build a more vigorous root system. During priming, nutrients are taken up by the seed. When sown, the elevated nutrients help early germination of the growing embryo through nutrient mobilisation. As roots emerge from a germinating seed, they seek out moisture and nutrients. Using Converte Seed Primer gives your crop an early advantage for optimum growth and development.

For use with conventional and organic seed in:
Horticulture, broad-acre, home garden, pasture improvement.



Typical Analysis

Nutrient	mg/L
Kjeldahl Nitrogen as N	23,700
Phosphorus as P	1260
Potassium	8,760
Organic Carbon	121,000
Sulphate	16,200
Silicon	72
Calcium	1760
Magnesium	1940
Sodium	7550
Chromium	62
Cobalt	248
Copper	622
Manganese	2180
Molybdenum	377
Nickel	47
Selenium	6
Zinc	2,090
Boron	421
Iron	4,470

Concentrate Application Guideline

Usage	Application Rate
Broad-acre	Spray seed with 500 ml per tonne mixed with 4L of water.
Pasture/ home gardens/ turf	Mix 1:10 with water then spray seeds 1-2 hours before Planting. Do not soak.

Note: Seeds should be sown 24-48 hours past priming.
Storage and Handling: Compatibility and/or performance cannot be guaranteed when combined with other products. Store in a cool, dry area out of direct sunlight. Agitate or shake well before use.
Safety Directions: Product is non hazardous. Keep out of reach of children.
Manufactured by: Converte Pty Ltd, PO Box 8159, Griffith, NSW, 2680

Available in 100 ml, 5 litre, 20 litre, 1000 litre packaging

